

Mobile Classifier

KEY BENEFITS

- Engages users
- Increases awareness
- Reduces data leakage
- Enforces policy
- Drives security solutions
- Exploits a common platform

Delivering consistent message classification for mobile devices

At A Glance

With an increasing variety of mobile devices in use in modern workplaces, IT teams are challenged not only by the complexity of managing diverse platforms, but also by the security risks present when personal and corporate data co-exist on the same devices. Whilst many organisations have adopted data classification, mobile devices often fall outside this policy and their very portability means that the threat of data being lost or stolen is higher than ever.

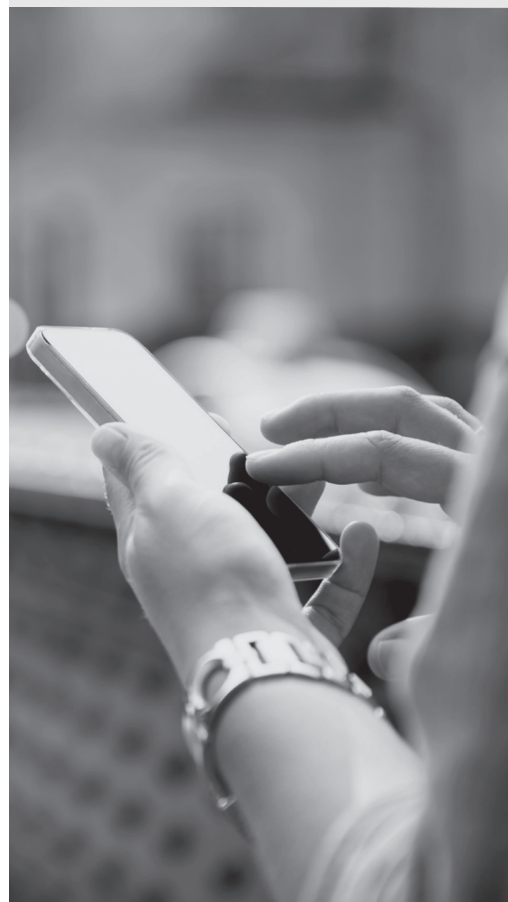
Mobile Classifier extends message classification to portable devices such as smartphones and tablets, providing a consistent classification experience to the widest range of mobile platforms, including iOS, Android and Windows Phone. By separating personal and business data, Mobile Classifier enables organisations to prevent email mishandling and reduce the likelihood of data leakage. As with other Classifier products, Mobile Classifier adds relevant visual and metadata markings to email messages, ensuring consistent actions by complementary security solutions such as Encryption, Data Loss Prevention and Digital Rights Management.

As a native app for handheld devices, Mobile Classifier is compatible with Mobile Device Management (MDM) solutions, working hand-in-hand to increase the security of information stored on mobile devices. The product can also be flexibly deployed, with both on-premises and cloud mailbox solutions, such as Microsoft Office 365.

Engages Users

Quick Classification

Mobile users are provided with a 'Quick Classification' interface providing a simple and convenient single-click mechanism to classify emails on devices where screen real-estate can be limited.



Wide Device Choice

The Mobile Classifier app is supported on the widest range of mobile device platforms, including iOS, Android and Windows Phone - ensuring a consistent email classification experience for users regardless of the device used.

Business Email Essentials

Mobile Classifier supports all the standard email functionality expected by business users, including the ability to access Outlook folders and search for messages.

Increases Awareness

Integrated Classification

The standard email features of Mobile Classifier are augmented with a full set of classification functions, including easy labelling of new messages, visual display of message classification within folders and when viewing a message, plus policy checks on-device with immediate user feedback.

Customisable Message Marking

Mobile Classifier can apply various different markings to an email based upon the selected label. Visible markings can be made to the email body and the subject line to provide safeguarding indications and guidance to all recipients.

Enforces Security Policy

Data Leakage Checks

Policy-based checks help prevent the mishandling of email and inadvertent data loss by providing warnings or blocking actions. For example, checks can ensure that only acceptable changes can be made to the message classification and that the recipients are permitted to receive a message of the chosen classification.

Segregated Business Email

Using Mobile Classifier for all business email prevents the mixing of personal and business email activity within the same email app – minimising the potential for careless leakage of business data to personal contacts.

User Compliance

Users can be obliged to label messages on Send, Reply and Forward, ensuring that they use classification consistently and ensuring compliance with information assurance policies.

Drives Security Solutions

Metadata-Based Security Context

Mobile Classifier can apply custom metadata to a message in the form of x-headers – providing other security solutions with a consistent classification context, for example to control the application of encryption by a gateway system. Mobile Classifier uses the Exchange Web Services (EWS) interface of Microsoft Exchange in order to perform a full range of classification operations and avoid the metadata limitations of a protocol such as Exchange ActiveSync (EAS).

Exploits A Common Platform

Unified Administration

The configuration of Mobile Classifier is straightforward and is accomplished using the unified policy management of the Classifier Administration console, ensuring classification policies are consistent across all Classifier products.

FORTRA

Fortra.com

About Fortra

Fortra is a cybersecurity company like no other. We're creating a simpler, stronger future for our customers. Our trusted experts and portfolio of integrated, scalable solutions bring balance and control to organizations around the world. We're the positive changemakers and your relentless ally to provide peace of mind through every step of your cybersecurity journey. Learn more at fortra.com.