

 SOLUTION BRIEF (Cybersecurity)

Manage Risks By Early Identification of Host Vulnerabilities and Threats

Discover and harden assets, prevent compromise, and remediate systems

McAfee® ePolicy Orchestrator® (McAfee ePO™) software and Digital Defense's Frontline.Cloud platform offer an integrated solution to provide organizations with clear visibility into unmanaged, rogue, and Shadow IT assets. Based on this enhanced discovery, Frontline.Cloud then provides comprehensive fingerprinting of assets and then provides the industry's only on-demand, host-optimized risk and threat assessment. Powered with a real-time understanding of risk posture, via McAfee ePO software, your administrators can now prioritize the management and installation of threat detection and anti-malware agents or updates on both managed and unmanaged devices or decide to begin remediation efforts.

Digital Defense Solution

- Frontline.Cloud Platform 6.0.34
- Supports: Frontline VM™, Frontline WAS™, Frontline ATS™

McAfee Compatible Solution

- McAfee ePO 5.3.2
- McAfee ePO 5.9.x



Connect With Us



The Business Problem

Unmanaged, rogue, and Shadow IT systems are targeted by attackers, as most of these systems remain unpatched or primed to start an infection, eventually leading to further compromise of your network and a subsequent breach. Without eliminating these blind spots by properly assessing both vulnerability and threat risk of your assets and web applications, you may be increasing the probability of a breach. You need a proactive approach to assess hosts for vulnerabilities and threats in order to better prioritize patching and investigations and rapidly deploy additional security measures and tools.

McAfee ePO and Frontline.Cloud

With McAfee ePO software and Frontline.Cloud, we provide more comprehensive and proactive management and protection for endpoints based on an understanding of vulnerability and threat risk. You benefit from:

- Accurate and comprehensive host identification
- Policy orchestration that prioritizes and automates deployment of agents to newly discovered unmanaged systems and immediately upon detection of potentially compromised systems
- A connected ecosystem provides the capability to schedule a vulnerability or threat scan directly from McAfee ePO software operationalizes this information to evaluate and improve the security posture of the organization on a continuous basis.

Hostname	IP	OS/Platform	MacAddress	OsFamily	OsType	LastUpdated
172.28.71.98	172.28.71.98	ping	00:50:56:86:76:96	unix	server	6/13/18 9:22:45 AM CST
192.168.89.109	192.168.89.109	wp	00:5c:29:59:37:4d	windows	client	6/13/18 9:22:45 AM CST
192.168.89.107	192.168.89.107	ping	00:5c:29:29:12:56	unknown	server	6/13/18 9:22:45 AM CST
192.168.89.108	192.168.89.108	wp	00:5c:29:29:72:53	unknown	server	6/13/18 9:22:45 AM CST
192.168.89.111	192.168.89.111	ping	00:5c:29:29:10:53	unix	server	6/13/18 9:22:45 AM CST
192.168.89.115	192.168.89.115	ping	00:5c:29:29:82:9f	unix	server	6/13/18 9:22:45 AM CST
192.168.89.120	192.168.89.120	wp	00:5c:56:86:96:9f	unknown	server	6/13/18 9:22:45 AM CST
192.168.89.254	192.168.89.254	ping	00:43:8a:59:29:49	unknown	unknown	6/13/18 9:22:45 AM CST
192.168.89.86	192.168.89.86	ping	00:5c:29:16:9f:4d	unknown	unknown	6/13/18 9:22:45 AM CST
192.168.89.87	192.168.89.87	ping	00:5c:29:16:80:49	unknown	server	6/13/18 9:22:45 AM CST
BASEWITCH082	192.168.89.112	wp	00:5c:29:71:4c:19	windows	client	6/13/18 9:22:45 AM CST
BUFF-HEARTBLEED	192.168.89.117	ping	00:5c:29:46:86:23	unix	server	6/13/18 9:22:45 AM CST
buFF-virtual-machine	192.168.89.118	ping	00:5c:29:32:99:05	unix	server	6/13/18 9:22:45 AM CST
buFF-virtual-machine-2	192.168.89.122	ping	00:5c:29:5a:7c:5f	unix	server	6/13/18 9:22:45 AM CST
CLAMAVSERVER	192.168.89.113	ping	00:5c:29:71:17:24	unknown	client	6/13/18 9:22:45 AM CST
COSSAN	192.168.89.116	ping	00:5c:29:7c:9f:4d	unix	server	6/13/18 9:22:45 AM CST
ISAC-PC1	192.168.89.114	ping	00:5c:29:72:7f:8a	windows	client	6/13/18 9:22:45 AM CST
MSB-PC	192.168.89.125	ping	00:5c:29:7a:15:97	windows	client	6/13/18 9:22:45 AM CST
MS-WIN8-TECH	192.168.89.119	ping	00:5c:29:47:84:7c	windows	client	6/13/18 9:22:45 AM CST
URUNTO-14-SERVER	192.168.89.121	ping	00:5c:29:6a:07:9f	unix	server	6/13/18 9:22:45 AM CST
URUNTO-16-SERVER	192.168.89.123	ping	00:5c:29:68:52:9a	unix	server	6/13/18 9:22:45 AM CST
WFO-PC	192.168.89.124	ping	00:5c:29:41:3c:29	windows	client	6/13/18 9:22:45 AM CST
WORLD-CSE7	192.168.89.110	ping	00:5c:29:73:47:2a	windows	server	6/13/18 9:22:45 AM CST
WORLD-PC05	192.168.89.124	ping	00:5c:29:6a:07:96	windows	client	6/13/18 9:22:45 AM CST
WIND-2-MATCHED	192.168.89.108	ping	00:5c:29:7a:5a:58	windows	client	6/13/18 9:22:45 AM CST

Figure 1. Detect rogue hosts that introduce vulnerabilities.

Key Advantages

Comprehensive and precise detection capabilities quickly address risk or compromises

Through the integration of McAfee ePO software and Frontline.Cloud, you can:

- Eliminate blind spots in infrastructure
- Track, monitor, and assess dynamic and “transient” infrastructure
- Assess new hosts on demand for vulnerability and threat risks in real time, without impacting host or network performance
- Eliminate false positives based on highly customized scanning
- Immediately assess risk based on identification of both operating system and web application vulnerabilities
- Get early warning of compromises prior to McAfee ePO software fully managing the endpoint
- Prioritize the installation of the right protections for new and existing assets based on higher-risk assets
- Verify existing versions and install new or updated versions of McAfee ePO agents for enhanced protection

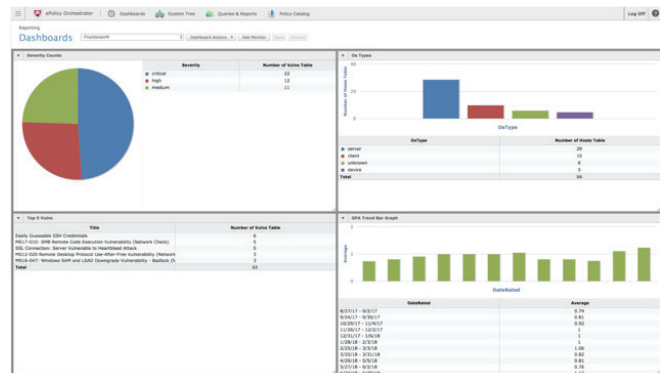


Figure 2. The McAfee ePO software and FrontlineVM (part of Frontline. Cloud) integrated solution offers comprehensive visibility into network asset vulnerabilities by type/criticality and security posture trending analytics.

Learn More

For more information, contact your McAfee representative or channel partner, or visit www.mcafee.com.