

FORTRA



CASE STUDY (Globalscape)

Globalscape EFT™ Provides B2B Gateway for Major Airline

Easy integration with microsoft biztalk, better visibility, better recovery time objective, less risk

Overview

From travel to communications, a large corporation in the United Kingdom, with more than 60 subsidiaries, including a major airline, and more than 70 thousand employees worldwide, provides air transportation for more than 5 million travelers every year. Many of the organization's subsidiaries have deployed Globalscape managed file transfer (MFT) software in their networks, but some still use "home grown" file transfer systems that are not efficient and less secure than is needed in today's complex networking environments.

Challenge

The company has leased lines, Internet, and other modes of communication between their subsidiaries, external partners, customers, and themselves. The company wanted to replace "legacy" scripted transfers with an MFT system. Integrating with Microsoft BizTalk server, used internally as a business processing translation tool, was also a firm requirement.

Implementation

Microsoft BizTalk Server is an Inter-Organizational Middleware System (IOMS) that enables the company to automate business processes through the use of adapters that are tailored to communicate with different software systems used in an enterprise. Although Globalscape's EFT Enterprise excels at business automation and integration, BizTalk is used throughout their organization, and they did not want to replace that.

Key Details

Company Industry **EFT
Airline,
Transportation,
Logistics**

OUTCOME

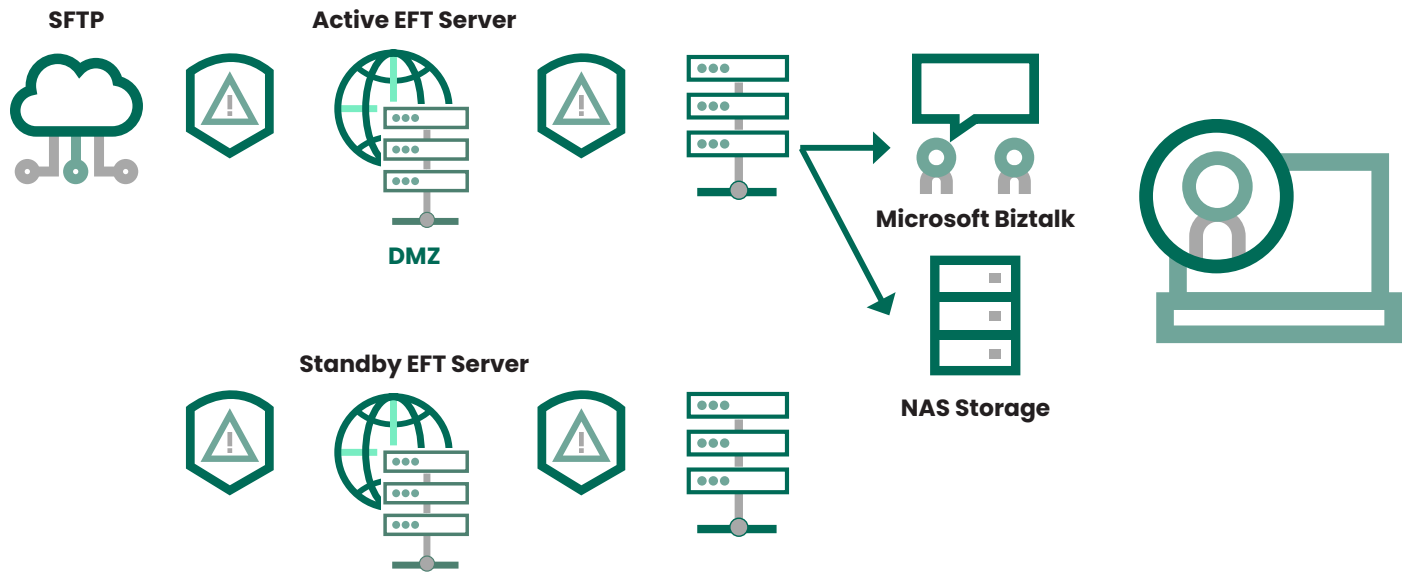
- A secure file transfer portal, safely accessed both externally and internally
- Reliable, always available service
- Complex automation for sequential file transfers
- Protection for critical files containing PFI, PII, personal data

APPLICATION

- Secure data transfer
- Integration with backend systems
- B2B gateway
- Active-Passive cluster for improved uptime

PRODUCTS

- EFT™ Enterprise, Active-Passive
- DMZ Gateway® Multi-Site
- OpenPGP Encryption
- CuteFTP clients



To complete the integration, EFT™ Enterprise and DMZ Gateway® were set up in an Active-Passive cluster configuration to exchange data with their backend Biztalk server and NAS storage over SFTP using multiple EFT Event Rules. Data is delivered to a monitored folder, where the data is encrypted with OpenPGP, and then proxied through DMZ Gateway to the Internet, where the data is shared with other groups in their organization, in addition to external partners and customers.

Result

Thanks to the quick and easy integration with the company's backend systems (Biztalk and others) "out of the box," there was very little disruption to their existing BizTalk processes during setup. Globalscape's **EFT** and **DMZ Gateway** replaced their legacy file transfer process with modern, automated processes and seamless integration. The customer now has better visibility into those processes and, with the active-passive cluster configuration, improved Recovery Time Objective (RTO) in the case of service disruption, which results in much less risk in transactions.



Fortra.com

About Fortra

Fortra is a cybersecurity company like no other. We're creating a simpler, stronger future for our customers. Our trusted experts and portfolio of integrated, scalable solutions bring balance and control to organizations around the world. We're the positive changemakers and your relentless ally to provide peace of mind through every step of your cybersecurity journey. Learn more at fortra.com.