

FORTRΔ

# Migrating Off SQL Server Agent

How to plan and prepare for a  
successful migration to JAMS





# IT'S TIME TO MOVE BEYOND SQL SERVER AGENT & MAKE THE SWITCH TO JAMS

Learn how to modernize your automation environment, simplify the complexity of scheduling, and scale your business for growth.

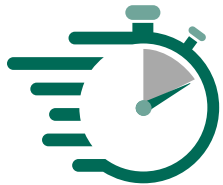
The demands on IT professionals today continue to grow. As IT teams find themselves struggling to keep up with the complexity of their automation environments, they must continue searching for more integrated, streamlined, and cost-effective solutions that scale with their business. Organizations need to leverage flexible and straightforward solutions for job scheduling and workload automation that empower them to break free of complicated native scheduling tools like SQL Server Agent. Many companies have realized the shortcomings of SQL Server Agent, including its few time-based scheduling options and lack of ability to run jobs across multiple platforms. But they may be unsure of how and where to start their SQL Server Agent conversion journey.

Here's where your migration journey begins. With so many essential business operations at stake, it may seem overwhelming to move from one solution to another. Your past experiences with SQL Server Agent probably make you think there is significant time, cost, and services required to move to a new solution. But migrating from SQL Server Agent to JAMS is easier, more common, and more predictable than you might think. No long consulting gigs here. Just a streamlined, straightforward plan to get you where you need to go. It's time you gain confidence to move away from the limitations of SQL Server Agent and expand your automation beyond SQL to improve, retool, streamline, augment, and elegantly design your automation. Find out why so many companies just like yours have made the switch.



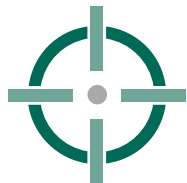


# 6 REASONS TO CHOOSE JAMS OVER SQL SERVER AGENT



## RAPID MIGRATION AND ONBOARDING

Make the transition to JAMS quickly and efficiently. Proven services and utilities make it easy to regain control of your existing jobs defined in SQL Server Agent, migrate them, and start seeing an immediate return on investment.



## OPTIMIZE RESOURCES

Stop spending time on tedious troubleshooting tasks like chasing down why jobs didn't run or where files ended up. With robust monitoring capabilities, JAMS alerts you to issues as they arrive, so you can focus on innovation.



## SIMPLIFIED ADMINISTRATION

Reduce reliance on single-product specialists and make powerful workload automation accessible—and manageable—for your entire IT team.



## ALL THE RIGHT FEATURES

Breathe new life into critical business processes with a complete set of tools right out of the box—job monitoring, alerting, workflow design, auditing, and reporting.



## MODERNIZED APPROACH

Relying on a single, native scheduler like SQL Server Agent may actually cost more over the short- and long-term. Ensure you are keeping up with the changing IT landscape and modernizing your approach across all platforms and applications.



## CLOUD REQUIREMENTS & SUPPORT

As organizations move to cloud and hybrid environments, cloud support should be clearly defined. Make sure cloud readiness is part of your vendor support strategy as it is with JAMS.



# YOU'RE IN GOOD COMPANY WHEN YOU MAKE THE SWITCH FROM SQL SERVER AGENT TO JAMS



## SEE WHAT OTHER COMPANIES ARE SAYING

Discover why IT professionals at leading companies are switching to a better solution. Read [G2 reviews](#) to learn why JAMS is rated a Leader.

# DOS AND DON'TS OF RE-EXAMINING YOUR AUTOMATION

## #1: DON'T START YOUR EVALUATION PROCESS TOO LATE

Evaluating new solutions takes time. So if you delay evaluating new providers, you may not have enough time to switch comfortably. The sooner you start, the more time you'll have to make a good decision.

## #2: DON'T FEAR CHANGE

Putting off migrating automation solutions because you fear change can paralyze your business from moving forward and reduce efficiencies. Many companies that make the switch to JAMS indicate they wish they had done so sooner.

## #3: DO RELOOK AT YOUR AUTOMATION

A lot has changed in your business since you implemented SQL Server Agent. You've scaled out, big time. You have critical jobs running outside of SQL and on other applications that you may want centralized. It's time to re-evaluate and take a fresh look at your automation. Remember, your work now should drive overall strategy, not comfort or complacency.



Before JAMS we were using very primitive approaches to sequence jobs from SQL server.

JAMS has various execution methods to integrate these jobs and monitor them in one place instead of looking into multiple different systems in case of job failures. JAMS not only saved employee time but helped to improve our job refresh SLA's.

**Administrator,  
Mid-Market Company**

## SEE HOW UVA HEALTH CURED SQL AGENT AILMENTS WITH JAMS

JAMS provided the centralized solution that UVA Health, an academic healthcare organization, needed to enable multi-platform workload automation.

At UVA Health, SQL Agent's lack of support for dependencies often derailed critical workloads. After implementing JAMS, their team runs hundreds of jobs and setups every day. And scheduled hourly workflows enable UVA Health to meet business demands for near real-time information. Plus, JAMS has eliminated the need for personnel to manually run jobs. "That's been a huge benefit, and a huge time saver," said Scott Carter, Systems Analyst and DBA.

We've increased capabilities to deliver output on a system basis, and established more tightly coupled, multi-platform processes. It's been fantastic. I wish we had jumped on a lot sooner than we did, but I'm glad we're on JAMS now.

**Scott Carter,  
Systems Analyst & DBA**

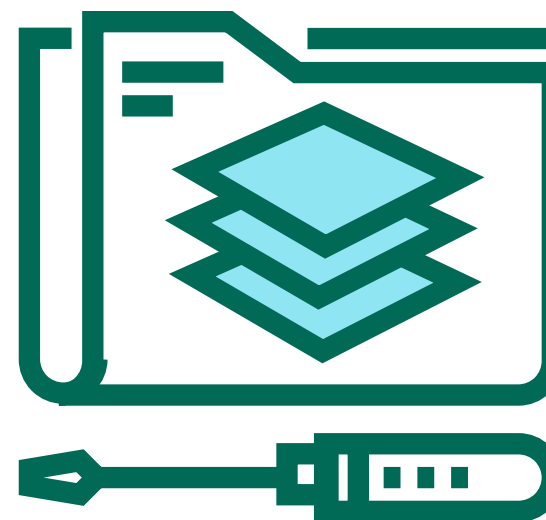
[READ MORE](#)



## START YOUR SQL SERVER AGENT MIGRATION TODAY

It may seem like a hassle moving away from SQL Server Agent. You had obviously invested a significant amount of time and effort implementing the solution in the past. But now that you are considering migrating, you need to be certain the conversion will be seamless and that your solution will be modernized.

As you begin this journey, you can be sure that JAMS has the know-how and experience to streamline your SQL Server Agent migration. We offer comprehensive solutions and services to assist you—making your migration to JAMS painless. Best of all, your organization can significantly expand your automation efforts once you have converted to JAMS. Let us know how we can help move you forward.



## CONVERT SQL JOBS WITH EASE

JAMS includes native utilities to migrate and organize SQL Agent jobs regardless of the number of jobs, servers or SQL versions you employ. Once converted – a process that takes seconds per job – you can apply dozens of new properties to schedule and trigger jobs according to the unique requirements of your enterprise.



**SQL AGENT  
CONVERSION UTILITY**



# READY TO REPLACE SQL SERVER AGENT? REQUEST A DEMO OF JAMS

See JAMS in action and talk with an expert about how easy it is to replace SQL Server Agent with JAMS to orchestrate and modernize your IT environment.

[SCHEDULE MY DEMO](#)





# FORTRA

## **About Fortra**

Fortra is a cybersecurity company like no other. We're creating a simpler, stronger future for our customers. Our trusted experts and portfolio of integrated, scalable solutions bring balance and control to organizations around the world. We're the positive changemakers and your relentless ally to provide peace of mind through every step of your cybersecurity journey. Learn more at [fortra.com](https://fortra.com).

