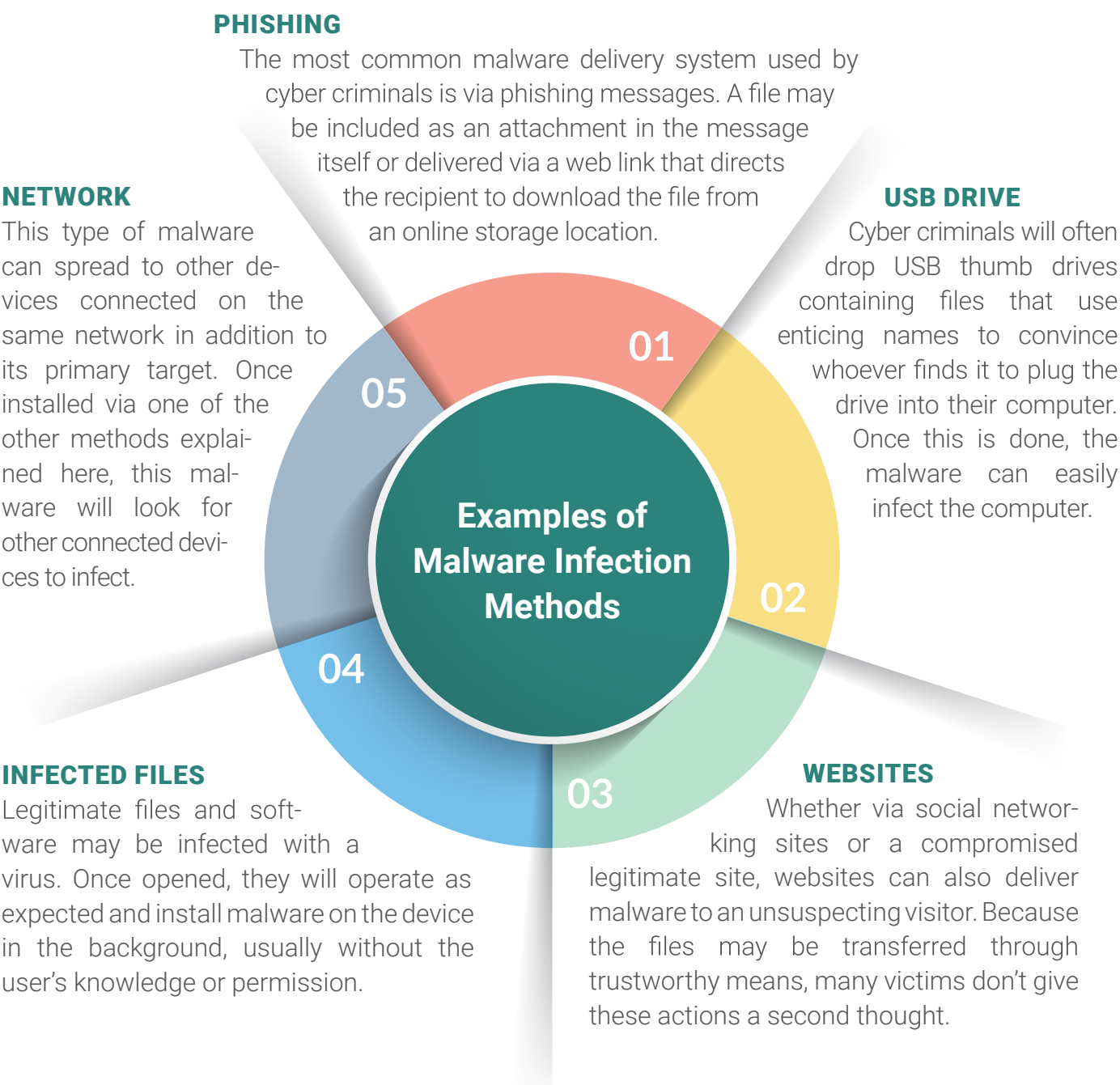


What Is Malware?

Malware refers to any software designed to have a malicious purpose once deployed on a computer or network. Malware infection typically occurs without a user’s knowledge and can affect both desktop and mobile devices. It can serve various purposes, from stealing information to spying on keystrokes and mining cryptocurrency using computer hardware.



Who Could Be a Malware Target?

Any type of business, government, organization, or individual could be a malware target. Cyber criminals look to victimize anyone who isn’t alert to the presence of malicious software. Due to many common tactics employed to trick users into trusting suspicious messages or files, detecting malware can be challenging.

