

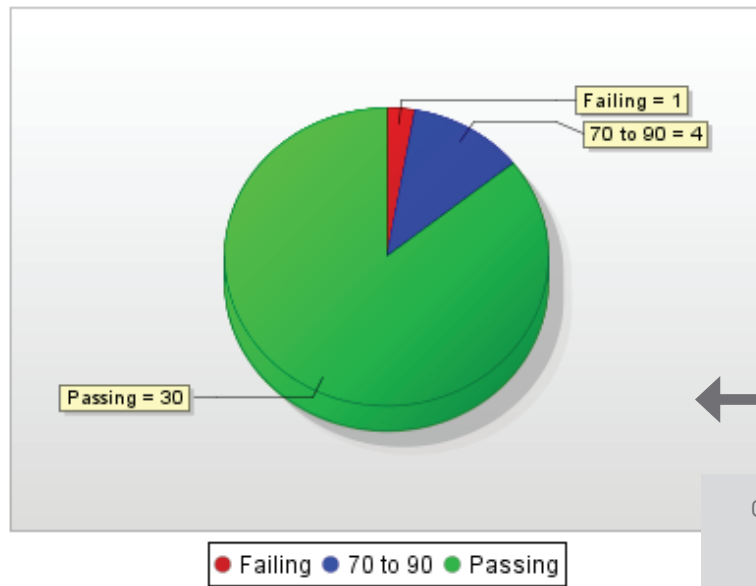


# Tripwire Enterprise Security Report Samples

## Windows CIS Scoring

<b>Date:</b>	1/14/20 1:32 PM
<b>Group by:</b>	Policy, Node
<b>Display raw score (without waivers):</b>	No
<b>Display criteria at end:</b>	No
<b>Nodes:</b>	Windows
<b>Node name:</b>	Not applied
<b>Node Properties:</b>	Not applied
<b>Policies:</b>	MS Windows Server 2008 DM Enterprise Benchmark - CIS v6
<b>Nodes sort:</b>	Name, ascending
<b>Policies sort:</b>	Name, ascending
<b>Scoring range sort:</b>	Score, descending
<b>Details table sort:</b>	Name, ascending

Security Scoring Reports, like this one for CIS scoring on Windows machines, reveal overall alignment with relevant security standards.



Customizable passing-failing ranges allow Tripwire Enterprise users to get one-glance views that show which machines are at the greatest risk.

### MS Windows Server 2003 DM Enterprise Benchmark - CIS v2.0

#### Passing

Node	Score	Waived Tests
WIN-COMPLIANCE1.PDXSE.TR IPWIRE.COM	90.70	0
ams.win2k3.dc1.tripwire.com	90.53	0
ams.win2k3.dc2.tripwire.com	90.53	0
ams.win2k3.dc3.tripwire.com	90.53	0
ams.win2k3.dc4.tripwire.com	90.53	0

ams.win2k3.dc5.tripwire.com	90.53	0
ams.win2k3.dc6.tripwire.com	90.53	0
ams.win2k3.dc7.tripwire.com	90.53	0
ams.win2k3.dc8.tripwire.com	90.53	0
lon.win2k3.crm.db1.tripwire.com	90.53	0
lon.win2k3.crm.db2.tripwire.com	90.53	0
lon.win2k3.crm1.tripwire.com	90.53	0
lon.win2k3.crm2.tripwire.com	90.53	0
lon.win2k3.crm3.tripwire.com	90.53	0
lon.win2k3.crm4.tripwire.com	90.53	0
lon.win2k3.crm5.tripwire.com	90.53	0
lon.win2k3.crm6.tripwire.com	90.53	0
ord.win2k3.proc1.tripwire.com	90.53	0
ord.win2k3.proc2.tripwire.com	90.53	0
ord.win2k3.proc2.tripwire.com	90.53	0

### 70 to 90

<u>Node</u>	<u>Score</u>	<u>Waived Tests</u>
WIN-COMPLIANCE2.PDXSE.TR IPWIRE.COM	79.76	0
WIN-COMPLIANCE3.PDXSE.TR IPWIRE.COM	79.76	0
WIN-COMPLIANCE4.PDXSE.TR IPWIRE.COM	83.93	0
WIN-COMPLIANCE5.PDXSE.TR IPWIRE.COM	83.93	0

### Failing

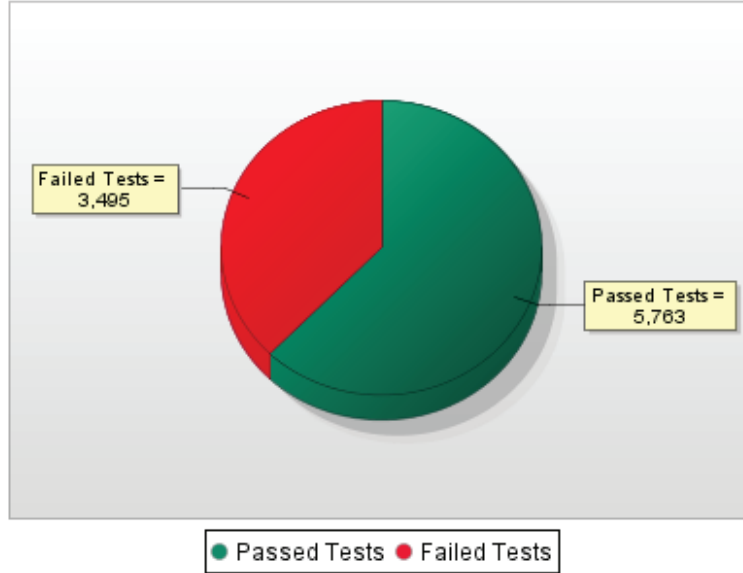
<u>Node</u>	<u>Score</u>	<u>Waived Tests</u>
DEMOSERVER.PDXSE.TRI PWIRE.COM	33.96	0



Security reports can be arranged from passing to failing nodes for general reporting, or from failing to passing for prioritization of configuration remediation tasks.

## NIST 800 - 53 Windows-High

Tripwire Enterprise's security reports can detail your infrastructure's alignment with security standards like NIST and DISA. For a given machine or group of machines, these tests can instantly aggregate the overall ratio of passed to failed control tests, then provide drill-down paths to important details.



## MS Windows Server 2003 DM High Security Control Catalog - NIST SP 800-53 Rev 1

### Access Control (AC)

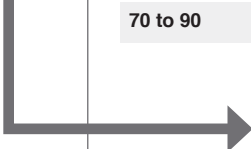
Clicking the report title generates a sub-report detailing each of the test failures that have been summarized in this report.

Node	Passed Tests	Failed Tests	Percent Compliant
172.19.254.67	19	37	
DEMOSERVER.PDXSE.TRIPWIRE.COM	28	74	
WIN-COMPLIANCE1.PDXSE.TRIPWIRE.COM	68	34	
WIN-COMPLIANCE2.PDXSE.TRIPWIRE.COM	65	37	
WIN-COMPLIANCE3.PDXSE.TRIPWIRE.COM	65	37	
WIN-COMPLIANCE4.PDXSE.TRIPWIRE.COM	69	33	
WIN-COMPLIANCE5.PDXSE.TRIPWIRE.COM	69	33	68%
ams.win2k3.dc1.tripwire.com	68	34	67%
ams.win2k3.dc2.tripwire.com	68	34	67%
ams.win2k3.dc3.tripwire.com	68	34	67%
ams.win2k3.dc4.tripwire.com	68	34	67%

Drillable sub-reports can show any test failures by covered by specific control areas, like Access controls, Identification and Authentication controls, or Configuration Management controls.

ams.win2k3.dc5.tripwire.com	90.53	0
ams.win2k3.dc6.tripwire.com	90.53	0
ams.win2k3.dc7.tripwire.com	90.53	0
ams.win2k3.dc8.tripwire.com	90.53	0
lon.win2k3.crm.db1.tripwire.com	90.53	0
lon.win2k3.crm.db2.tripwire.com	90.53	0
lon.win2k3.crm1.tripwire.com	90.53	0
lon.win2k3.crm2.tripwire.com	90.53	0
lon.win2k3.crm3.tripwire.com	90.53	0
lon.win2k3.crm4.tripwire.com	90.53	0
lon.win2k3.crm5.tripwire.com	90.53	0
win2k3.crm6.tripwire.com	90.53	0
.win2k3.proc1.tripwire.com	90.53	0
.win2k3.proc2.tripwire.com	90.53	0
.win2k3.proc2.tripwire.com	90.53	0

Clicking any of the node names reveals instant details of the tests failing on that machine or device.



### 70 to 90

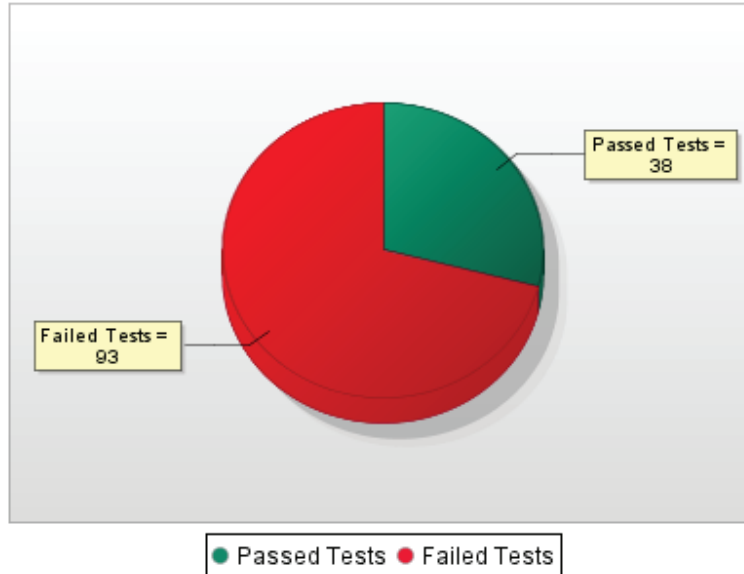
<u>Node</u>	<u>Score</u>	<u>Waived Tests</u>
WIN-COMPLIANCE2.PDXSE.TR IPWIRE.COM	79.76	0
WIN-COMPLIANCE3.PDXSE.TR IPWIRE.COM	79.76	0
WIN-COMPLIANCE4.PDXSE.TR IPWIRE.COM	83.93	0
WIN-COMPLIANCE5.PDXSE.TR IPWIRE.COM	83.93	0

### Failing

<u>Node</u>	<u>Score</u>	<u>Waived Tests</u>
DEMOSERVER.PDXSE.TRI PWIRE.COM	33.96	0

## Test Result Summary

Test Results Summary reports give visual and textual details of how specific machines or device groups compare to security policies and benchmark standards.



## MS Windows Server 2003 DM Enterprise Benchmark - CIS v1.2

(Generated 16:59 27 May 2020)

- 1. Service Packs and Hotfixes
  - 1.1 Major Service Pack and Hotfix Requirements
    - 1.1.1 Current Service Pack Installed

### Windows Server 2012 Service Pack Is Greater than

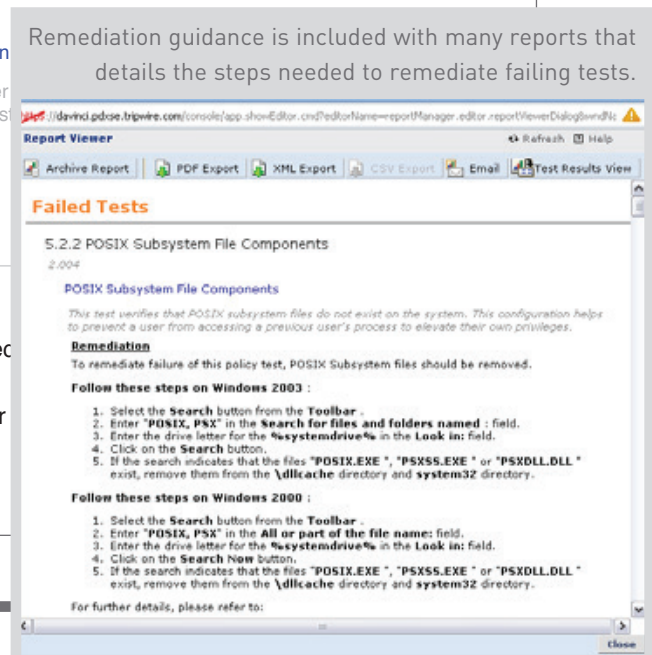
This test verifies that the current Windows Server version is greater than the minimum required version. Because critical security updates are often distributed regularly.

**Note**

tg00d-xp.tripwire.com

- 2. Auditing and Account Policies
  - 2.1 Major Auditing and Account Policies Requirements
    - 2.1.1 Minimum Password Length Is Greater than (Minimum)

Remediation guidance is included with many reports that details the steps needed to remediate failing tests.





Tripwire is the trusted leader for establishing a strong cybersecurity foundation. We protect the world's leading organizations against the most damaging cyberattacks, keeping pace with rapidly changing tech complexities to defend against ever-evolving threats for more than 20 years. On-site and in the cloud, our diverse portfolio of solutions find, monitor and mitigate risks to organizations' digital infrastructure—all without disrupting day-to-day operations or productivity. Think of us as the invisible line that keeps systems safe. **Learn more at [tripwire.com](https://tripwire.com)**

***The State of Security: News, trends and insights at [tripwire.com/blog](https://tripwire.com/blog)***  
**Connect with us on [LinkedIn](#), [Twitter](#) and [Facebook](#)**